

THIS THE DAY OF OCTOBER 1908,  
ROBERTA M. ROSSI, A WIDOW, DO HEREBY CERTIFY THAT I AM THE OWNER OF THE LANDS EMBRACED WITHIN THE BOUNDARIES OF THE FORE-  
SAID MAP, THAT I HAVE HAD SAID PROPERTY SURVEYED AND SUBDIVIDED AS SHOWN HEREON, THAT THIS PLAT IS MADE FOR THE PURPOSE OF  
DESCRIPTION AND DEDICATION; THAT ALL STREETS AND EASEMENTS SHOWN HEREON ARE DEDICATED TO THE PUBLIC USE.

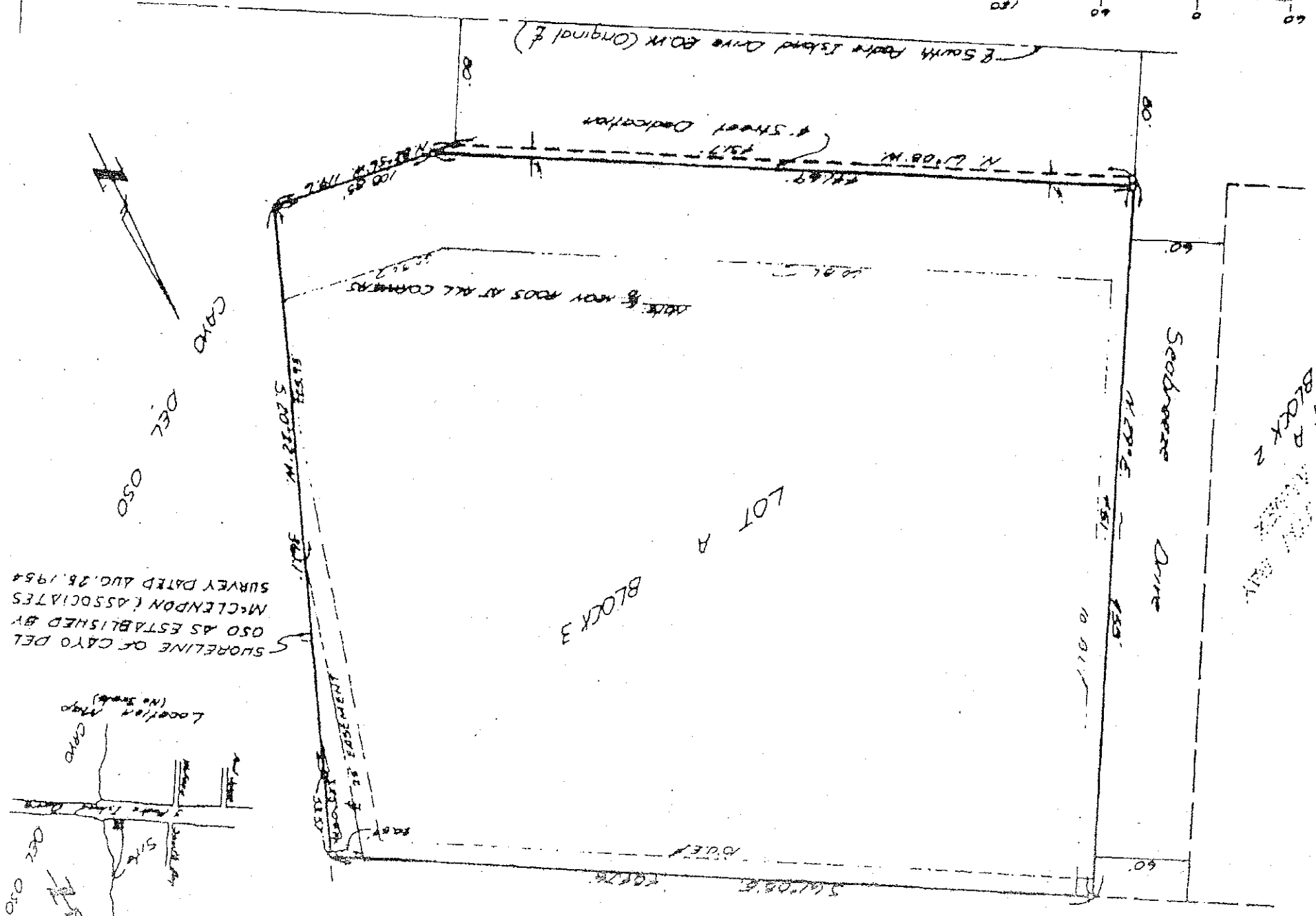
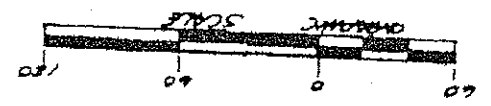
ROBERTA M. ROSSI  
*[Signature]*

BEING A REPLAT OF A PORTION  
OF LOT 5 SECTION 31, FLOR BLUFF  
8 ORIGINAL FARM AND GARDEN TRACTS  
AS RECORDED IN VOLUME A, PAGES 41  
42, 43, 44, NUECES COUNTY MAP RECORDS

# SOUTH BAY ANNEX

LOT A BLOCK 3

Plat of



SURVEY DATED AUG. 28, 1954  
MCCLENDON ASSOCIATES  
OSO AS ESTABLISHED BY  
SHORELINE OF CAYO DEL

